

# Historic Environment Awareness Project

The **Historic Environment Awareness Project** is an exciting new 3-year venture focussed around the Weald Forest Ridge. The Project is one of several partners within the Weald Forest Ridge Landscape Partnership Scheme. The HEA Project covers all three counties of the Forest Ridge; West Sussex, East Sussex and Kent.

**Ancient woodland** covers 22% of the WFR area, and represents a significant proportion of the UK's ancient woodland. The Historic Environment Awareness Project will work with communities to explore the archaeology of the Forest Ridge, in particular the woodland in which so many features lie undiscovered or unidentified.

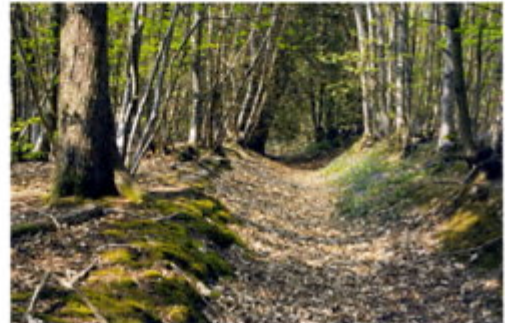
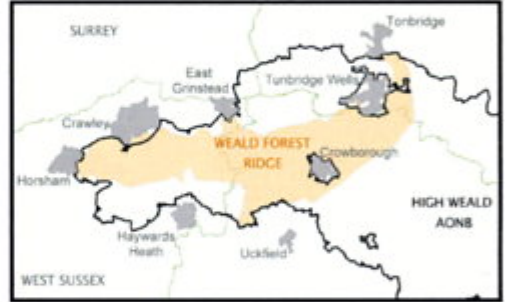
A **LiDAR survey**, using a plane to bounce lasers off the ground below, will map the landscape of the Ridge for the HEA Project. The technique can 'see' through the tree canopy and the data produced can be digitally modelled to produce three-dimensional images. Ancient routeways, ditches, pits, enclosures, mounds and banks will be revealed. Some of these features may already be visible to the eye in places but will never have been seen in their entirety, others will be completely new discoveries.

**Toolkits** are being produced to enable identification on the ground of archaeology within wooded landscapes, to help with recording and surveying, and to research the historic environment. The toolkits will be visual and easily accessible and will be tested by groups keen to find out more about their local woodland. Cab cards for woodland workers will also be produced.

**Information** in each of the three counties' Historic Environment Records will be enhanced by the results of investigation and recording of the Forest Ridge's hidden archaeology. New discoveries by the LiDAR survey will be incorporated too.

**Updates and more details** about the HEA Project will appear shortly on [www.eastsussex.gov.uk](http://www.eastsussex.gov.uk) on the archaeology pages. To find out about the Weald Forest Ridge Scheme visit [www.highweald.org](http://www.highweald.org).

**Would you like to get involved?** Perhaps you own, manage, visit or volunteer in a wood whose past intrigues you? The HEA Project Officer is keen to find people who would like the opportunity to find out more. Contact Lyn Palmer at [lyn.palmer@eastsussex.gov.uk](mailto:lyn.palmer@eastsussex.gov.uk) or 07554 436473.



Above: Vegetation-covered landscape.  
Below: same landscape modelled to reveal hidden features.  
LiDAR images courtesy of Peter Crow, Forest Research

